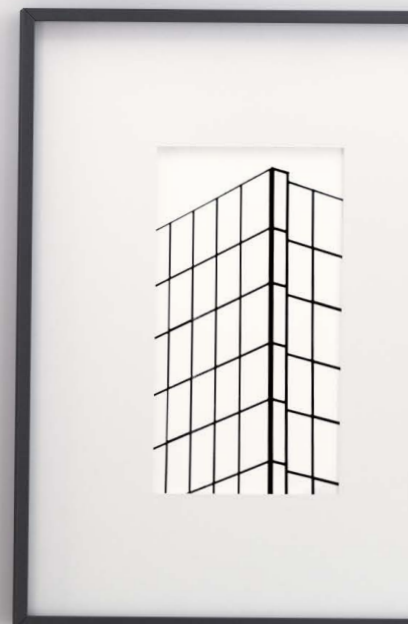


Nightingale Highlights

APRIL 2021

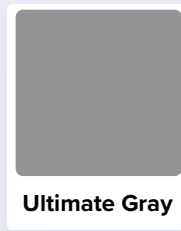
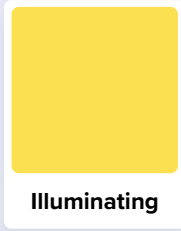


EMILY 601

2021 Colors of the Year



MALIBU 2200



MALIBU 2200-07

The Pantone Colors of the Year for 2021 are Ultimate Gray and Illuminating, respectively chosen for their warmth and dependability.

Ultimate Gray is expressed as a representation of “solid and dependable elements which are everlasting and provide a firm foundation.” Illuminating is described as “a bright and cheerful yellow sparkling with vivacity; a warming yellow shade imbued with solar power.”

These two independent and seemingly opposite colors are featured in 2021 to showcase strength and hopefulness. The combination of these colors creates a message of resilience and hope, that is both enduring and uplifting.

Pantone’s prediction of color trends impacts designers across all industries such as furniture, textile, fashion, accessory and technology. Each year designers are influenced and challenged by Pantone’s color of the year to innovatively integrate these colors/themes into the marketplace.

Yellow office chairs add the perfect pop of color and cheerfulness to your space, whereas gray provides you with focus and stability. Nightingale offers a variety of high-quality textiles, vinyls and leathers which come in a wide range of colors and grades. If you desire a quality office chair that reflects the colors of the year, Nightingale has many shades of yellow and gray upholstery options to choose from.

Celebrate National Decorating Month

April is National Decorating Month! This celebration lines up with spring cleaning, making it the perfect time to refresh your space and boost your mood in preparation for the warm

summer months. Decorating is not just limited to indoor spaces, update exterior set ups such as your porch or patio to match the change in season and reflect your personality.

Make the most of National Decorating Month with these quick and easy tips:



Start small

Reorganizing a tiny section of counter space or decluttering a closet are simple ways to ease into redecorating an entire space. Once that's done, swap out old décor for new and exciting pieces to instantly uplift and transform any area.



Add some freshness

Incorporating plants or fresh flowers throughout your space will automatically liven and brighten it up.



Utilize pops of color

Colors truly impact the feel of a room. Lighter and brighter colors make a space feel airy and cheerful. Spaces become energized with the use of warm tones in red, orange and yellow. Cooler tones found in purples and blues bring a sense of calm. Understanding the impact colors have on the feel of a room, gives you the skill to select accent pieces that will create the mood you want to achieve.

This April, celebrate National Decorating Month and treat yourself to the simple joys of revamping an all too familiar space. You'll be surprised by how the smallest changes can result in such a positive shift in the overall look and feel of your space.

Benefits of an Outdoor Workspace

Biophilic design has been so well-embraced by the interior design community that most offices these days are adorned with plants, greenery and aspects of outdoor life, such as natural lighting. This design theme is proven to boost employee morale and productivity, so why not bring the inside out and create workspaces that can be enjoyed in the natural world.

Investing in multi-use outdoor workspaces is a natural next step for companies that are committed to the overall physical and mental health of their employees. This investment will result in significant and long-lasting benefits for individual employees and entire organizations. Please read below to learn about the advantages spending time outside can have on mental and emotional comfort while working.



Improved Focus

Being outside and exposed to nature is a simple and effective way to become more attentive and gain new perspectives on

work projects or daily challenges. A few minutes outside can help clear the mind and prepare you for the rest of the workday.



More Impactful Collaboration

Outdoor gatherings spark creative conversations. Comfortable outdoor workspaces can improve team building and result in new connections between colleagues who wouldn't normally

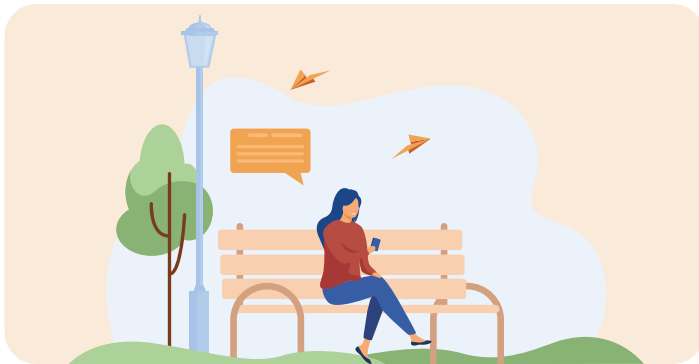
cross paths in the workplace. Nature provides a relaxed environment to foster a greater sense of community and ease of communication that can sometimes get stifled within the office.



Safer Environment

When people start going back to work, businesses will consider how best to adapt to and implement new health and safety measures within their workplace. Outdoor workspaces allow employees to work individually or as a group in a safe,

socially distanced manner with the addition of fresh air. Open space and a natural environment can help workers feel more relaxed and comfortable when returning to the office.



Reduced Stress

Leaving our typical work environment and stepping outside of daily routine provides a much-needed change of scenery and mental break. Nature and fresh air help us relax and be more present.



Enhanced Creativity

Research suggests that more time outside and less screen time can improve cognitive and creative thinking skills; both of which positively impact productivity.

Providing an outdoor workspace for employees to enjoy in the warmer spring and summer months, can improve overall company performance and ensure that employee well-being is prioritized. This is especially important during the transition from working at home to returning to the office.

The Importance of Ergonomic Seating in Training Environments



Shown in Insight, Marine16

NXO 6401

Did you know that the more stagnant a training environment is the less engaged and receptive your audience will be?

Sitting in a rigid immobile chair results in poor blood circulation and muscle fatigue which negatively impacts concentration and memory. Couple that with the distractions of an uncomfortable chair and it is apparent that proper ergonomic seating is necessary for successful training and meeting spaces.

Nightingale's NXO is a versatile stacking and nesting chair that effortlessly combines comfort with a pronounced engaging design. Its supportive dual hexagonal torsion bar system with preset tension creates the chair's oscillating back which allows for dynamic movement that supports the natural curve of your spine. This design delivers exceptional ergonomic support and comfort. The NXO also features enhanced seating comfort with our standard Enersorb™ foam in the seat, dispersing weight and pressure points, vertically and horizontally.

The NXO is lightweight, easy to move and its smooth carpet casters allow users to be active and move freely. This feature will keep users focused and involved throughout training sessions. Its folding seat allows the chair to infinitely nest horizontally and stack vertically up to 3 chairs high.

The NXO has the following optional features: mirror chrome legs, hard surface casters, floor glides, fold-away tablet arm for the right- or left-hand side and upholstered back. With such customizable options and space smart design, the NXO is a unique stacking chair that is sure to enhance your corporate training space.

Nightingale's Collection of Highly Cleanable Textiles

In a time where cleanliness and sanitization are high priority, Nightingale is pleased to offer users a wide selection of easy to clean textile options. Nightingale's suppliers Momentum and Stinson, along with Mayer Fabrics and Arc-Com, have upgraded

their product offerings to include a wide variety of textiles that can be cleaned with high-grade disinfectants, to keep users safe in all environments where sanitization is critical.



Mayer Fabrics

The supplier of Nightingale's Designer II and Designer III Collections, Mayer Fabrics, creates highly durable upholstery options that come in exceptional designs at affordable price points. Mayer's Designer II card features 8 patterns that are cleanable with water-based cleaners, pure solvent cleaners, water/solvent mixtures or are inherently cleanable or bleach cleanable. Inherently cleanable means the fabric is ink, stain, mildew and moisture resistant. Bleach cleanable

fabrics ensure users that they can completely disinfect high traffic sitting areas with ease. Mayer's Designer III card offers 5 patterns of vibrant colored and textured materials that can be simply cleaned with a water and solvent solution. Users can freely enjoy their chair knowing it is easy to sanitize and will always be safe to use. Please reference the back of each fabric card to see which cleaning solution is appropriate and recommended for use on your selected upholstery option.



Momentum Textiles

Nightingale's supplier of our Designer Collection card, Momentum, now has a Covid-19 Approved Cleaners Guide on their website. These newly listed Covid approved cleaners are in addition to their current list of more than 40 approved basic cleaners and bleach cleanable upholstery options. Nightingale's Designer Collection features 15

patterns in over 100 colors that can be easily cleaned with water or water and solvent solutions. Please reference the back of Momentum's Designer Collection fabric card to see the appropriate and recommended cleaning method for your chosen textile.



Stinson

Stinson offers users bleach-solution cleanable and anti-microbial fabrics in Performance or Vinyl & Non-PVC product categories. Simply pick the fabric category you are interested in and then search for patterns that are specifically bleach-cleanable, antimicrobial or both. Stinson's Vinyl & Non-PVC category also offers patterns that are

compatible with registered disinfectants for use against Covid. The Vinyl & Non-PVC page of the Stinson site has a Disinfectant and Cleaner Compatibility Guide which can be used to enhance the fabric selecting process by displaying patterns based on their compatibility with certain disinfectants.



Arc-Com

Nightingale's Arc-Com fabric card has 20 detailed patterns. These durable fabrics can be easily cleaned by one or a combination of, the following methods: mild-dry cleaning solvents, a water-based cleaning agent or bleach. Over half of Arc-Com's upholstery offerings are bleach cleanable.

Nightingale is proud to provide users with a comprehensive collection of high-quality textiles and vinyls that are sanitary, antimicrobial, easy to disinfect and compatible with Covid approved cleaners. Please visit Nightingale's Textiles Page under the Resources tab to view all our upholstery options which come in a wide variety of colors, textures and grades.

Meet the Malibu



Shown in Vox, Goldenrod

Malibu 2200

Nightingale's Malibu is a mid-back ergonomic task chair that was designed to facilitate freedom and flexibility throughout the workday. With its lightweight and simplistic design, Nightingale's Malibu Collection was made to move.

Malibu's innovative, flexible back moves with you to provide high quality support, no matter your sitting position. The Malibu is uniquely engineered with a perforated high flexion back which enables spine health and allows for breathability and dynamic movement.

The Malibu effortlessly fits into any workspace with its breezy minimalist design while providing maximum comfort and support. Users receive excellent ergonomic support in this easy to adjust chair.

The Malibu is equipped with the following ergonomic features:

4-Way Arm Adaption – Create comfort at any angle with these 4-D arms that pivot, slide and are height/width adjustable. Arms are made with sculpted polyurethane arm pads.

Tilt Lock – Lock the seat in your desired position for all day comfort.

Self-Weighted Mechanism – Weight activated self-adjusting tension control.

Pneumatic Height Adjustment – Easily adjust to your preferred height so you can work with correct posture control.

Seat Slider – This integrated seat slider allows for quick and simple seat depth adjustment.

Sturdy Base & Casters – Durable nylon base paired with standard dual-wheel carpet casters.

Optional Enersorb™ Foam Seat – Ultra-comfortable Enersorb™ seat foam to reduce pressure points and increase circulation throughout the day.

Optional Sit/Stand Stool Model – Includes the swivel mechanism with pneumatic height adjustment and seat slide adjustment in an innovative stool design, to facilitate movement and freedom as you work.

The Malibu can be upholstered in a variety of Nightingale's high-quality textiles, vinyls and leathers. With a wide selection of colors and grades to choose from, we make customizing your chair easy and enjoyable.

ABOUT US

Founded in 1928, Nightingale is a contract seating manufacturer that puts purpose before profit. By collaborating with top designers, engineers and research teams, we create quality ergonomic products that are good for your body and the planet. Nightingale is one of the country's Greenest Employers and is committed to building products with minimal carbon footprints that are recyclable, sustainable and durable. All our products are made in our waste-free facility powered by clean energy. As one of the country's Best Managed companies, Nightingale's commitment to comfort, quality and innovation drives our vision to be a global industry leader.

We invite you to visit us at www.nightingalechairs.com to view all our quality seating options, obtain virtual literature, use the My Chair Maker app, learn more about our green initiatives and discover Nightingale's story.



CONTACT

General Information

Sales Inquiries

ISO 14001 & 9001 CERTIFIED
TB117-2013 COMPLIANT

Main Office

(905) 896 3434

info@nightingalechairs.com
www.nightingalechairs.com

Customer Care

1 (800) 363-8954

customercare@nightingalechairs.com

