

Nightingale Highlights

JULY 2020





Designer II Collection by Mayer

New Fabric Collection by Mayer

The Designer II Collection card by Mayer Fabrics offers a comprehensive grouping of woven and coated textiles. The textures and small-scale designs display beautiful color stories of neutrals with pops of color throughout. The woven textiles are unique with their own special weave interest and color palette.

All patterns offer versatility, heavy-duty performance characteristics and affordable solutions for commercial seating projects in all markets. The compatibility between the textures, designs and color combinations throughout the layout makes the selection process seamless for designers, especially during those tight deadline projects. The Designer II Collection card provides performance textile solutions for full chair coverage.

All patterns in the Designer II Collection card meet or exceed ACT performance guidelines, are either GREENGUARD OR GREENGUARD GOLD Certified, offer stain repellent finishes and may contribute to LEED certification.

Mayer's Pattern Stories

Bali features a rich textural fabric woven in a dense yarn construction. Colors are versatile in mingled combinations that use boucle to make this well-priced texture a sophisticated choice at a great price.

Havana features a tightly constructed textural quality with natural slubbing and refined striation in the ground. A nice range of neutrals and medium tones along with elegant pastel shades make this fabric applicable for upholstery in all commercial markets.

Sydney adds a soft touch with its chenille-like textural elements. A versatile neutral color foundation is accompanied by Citrus and Mulberry tones to create a fresh palette.

Rumba features a versatile chair pattern in which interwoven warp and weft yarns create an abstract linear grid. Careful layering produces dimension and sophistication in this extremely affordable fabric.

Tango features a multi-colored, modern geometric design for seating application in all markets. Tango features a tight, intricately woven yarn construction. The color palette is fresh and fashion forward with a great foundation of neutrals and touches of rose, coral and cerulean blue

Fedora is reminiscent of a plush woolen felt, Fedora is a more versatile polyester option with a soft hand and a mélange like quality. Available in 25 heathered colorways, Fedora provides comfort as well as performance with polyester backing and abrasion resistance exceeding 100,000 double rubs at a very competitive price point.

Caressa is a phthalate-free vinyl with a color line that includes a range of usable neutrals along with a nice group of fashion forward colors such as Parsley, Lemon and Cameo and blues that combine cobalt with indigo. Caressa is anti-microbial and anti-bacterial, and features ink and stain resistant protection.

Mingle is a phthalate-free vinyl with a unique emboss that emulates the look of wool tweed. A versatile range of color combinations totaling 24 in all, along with extreme-wear performance characteristics, make Mingle the perfect choice for demanding commercial environments.

NIGHTINGALE HIGHLIGHTS



Designer III Collection by Mayer

The Designer III Collection card by Mayer Fabrics was designed with price and textured solids in mind. This card features 5 dynamic patterns; Prism, Optic, Variant, Continuum and Theory, each working independently and together, to create a full spectrum of colors. “Core” colors, Alabaster, Dove, Zinc, Café Au Lait, Espresso, Stone, Charcoal, Onyx, Ocean, Ink and Lipstick are standard cross market colors and can be found across all 5 color palettes. Color enthusiasts will enjoy this card and all it has to offer.

All five patterns are comprised of post-consumer recycled polyester and are GREENGUARD GOLD Certified. Multi-use for both unadhered vertical and upholstery applications. These also come standard with backing, and a PFOA and PFOS Free Stain Repellent. All patterns in this card come with a 10-year warranty.

Mayer's Pattern Stories

Continuum utilizes a fine slub yarn and basic weave structure. Continuum is the perfect choice for a natural linen look. Available in a broad range of 25 colors from sophisticated natural tones to richer colors.

Optic is a delicate weave choice along with its two-tone quality allows the pattern to interact with light. Optic is a delightful interplay for the eyes and hand. Available in 16 graphic colors.

Prism is a simple, small scale geometric reminiscent of a prism's shape. The tightly woven dobby weave gives Prism its small refractive surface texture. Available in a kaleidoscope of 25 colors ranging from soft neutrals to bolder, more saturated colors.

Theory is a modern spin on a classic solid pattern. A two-colored heather effect highlights the subtle ground weaves. Available in 25 clean, complex color combinations.

Variant, with its pronounced surface interest and cross dyed technique, has a much-desired nubby appearance and slightly chunky feel. Available in 15 colors, each with a unique striated effect giving the fabric subtle movement.

NIGHTINGALE HIGHLIGHTS



Designer Collection by Momentum

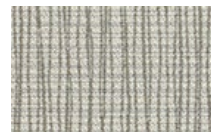
Designer Collection by Momentum

Momentum is a leading supplier of Sustainable Contract Textiles and the market leader in developing beautiful, sellable, Alliance partnership Programs supported by excellent service!

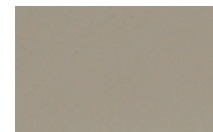
The Boundless Card is Momentum's broad-est offering of fabrics. The small to mid scale patterns and textures are in a range of colors. Enhancing the collection are performance patterns such as Crypton Greens® - Faux Felt and Cover Cloth. The Boundless Card also has the newest sustainable coated polyurethanes Endurance EPU™, Beeline EPU and Canter EPU.

Benefits

- PVC Free
- Zero waste chemicals and zero solvents in production
- Greenguard Certified
- Scratch resistant
- 10 year warranty
- Crypton Green fabrics are high performing and black cleanable



Graph



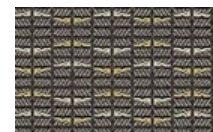
Endurance EPU



Epic



Infinity C-Zero



Slice



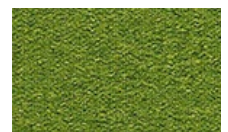
Lineup



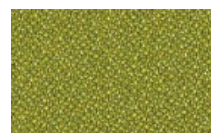
Cover Cloth



Guild



Faux Felt



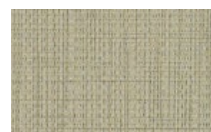
Origin



Cashmere II



Tradition C-Zero



Beeline EPU



Fuse



Canter EPU

All Momentum fabrics are made with recycled or natural fibers. All products are PVC free and GREENGUARD certified.

The Benefits of Antimicrobial Textiles

Beeline EPU

With recent studies showing that soft-surfaces within healthcare settings can enable the transmission of pathogenic microorganisms, many have looked to antimicrobial fabric options to help combat the spread from healthcare furniture. And while it is an option that is frequently used within healthcare, it can also be a smart choice within office settings as shared workspaces have become more and more prevalent. There are other benefits of going with an antimicrobial fabric as well. It can help in combating unpleasant odors, keep the fabric cleaner for longer periods of time, and even help the environment!

Mold and mildew can be found among the list of microorganisms that antimicrobial agents fight. These odor-causing bacteria can be released through sweat and other accumulated moisture. With less bacteria

surviving on the fabric, the furniture will remain cleaner and fresher for longer periods of time. This will lead directly to some positive environmental impacts.

Furniture fabrics staying cleaner for longer will result in fewer regular cleanings needed. The fewer cleanings will result in less water and detergent being used which is better for the environment. The fewer cleanings will also help to add longevity to the fabric which, in turn, will lead to a longer lifespan of the product overall. Not only will the consumer be happier about a longer lasting product, this will also minimize the carbon footprint created by products being replaced and discarded less frequently (less waste).

Nightingale offers upwards of 70 Stinson antimicrobial textiles to choose from, about 40 of which are also bleach-solution cleanable.

How To Clean Your Chair

With regular care and maintenance, your chair will provide many years of superior performance and satisfaction. To maintain the quality of your Nightingale chair, please follow the cleaning instructions outlined below.



Mechanism

Once a year, lubricate using light sewing machine oil or similar product. (Spray with plastic straw attached to sprayer). NOTE: To prevent dripping, avoid over lubrication which may cause damage to surrounding surfaces.

Plastic Parts

To clean, spray with a mild detergent and wipe off using a damp (water) cloth. Do not use abrasives or excessive amounts of cleaner.

Mesh

Clean with mild detergent and water applied with a clean damp cloth or sponge. Rinse with a damp (water) cloth and let dry. Never use hot water and avoid scrubbing. Use gentle movements. **Do not use solvent based cleaners on mesh, vinyl, fabric, or leather.**

Frame

Powder coat frames can be cleaned by wiping with a damp cloth and any mild detergent.

NIGHTINGALE HIGHLIGHTS



Two-Tone Option

All of Nightingale's fully upholstered seating can be made extra stunning in a two-tone application. Take a classic sleek Executive Model, like our EC6, and customize it to suit the décor in your space. Utilize the hundreds of textile options we offer to help carry the theme of your design. Use a classic black and white look to enhance simple elegance or go for a bold contrast of apricot and maroon. Get creative and allow the most important piece of furniture in your office to stand out, provide some form to its incredible function.

Nightingale is so fortunate to have the best upholsterers in the industry, with decades of experience. Our Artisans have

seen every upholstery trend for the past 50 years and are true masters of their craft. The double stitch method we utilize adds strength and durability while also creating beautiful lines for each of our award-winning designs. When you add a Nightingale model to your next project please allow our amazing upholsterers to create a work of art for you.

Please visit the textile section of our website, <https://nightingalechairs.com/textiles>, and view the hundreds of options we are proud to offer you.

Note: Two tone application offered on all models at no additional cost.

3 Benefits of Ergonomic Seating

At Nightingale, we understand that proper ergonomics is not an option in our chair designs. It is a necessity. Similarly, those tasked with selecting workplace seating should not view ergonomics as an option.

They should view it as a necessary investment. This investment can lead to an overall improvement in employee morale, reduced business costs, and heighten employee focus and productivity.



1. IMPROVED MORALE

Providing an ergonomically sound work environment shows your employees that you care about them and their health. This can noticeably enhance employee engagement, attitudes, attendance, and even loyalty. Making the health and welfare of your employees a top priority is essential in creating a positive work environment that leads to a higher employee retention rate.



2. REDUCED COSTS

The costs of hiring can pile up quickly once you consider the advertising for the position, time spent interviewing, and subsequent training of the new hire. Studies have shown that these turnover costs can be up to 20% of the annual salary of that position. Not to mention the distraction and disruption created by employee turnover.

Reducing ergonomic risk factors can also help in preventing musculoskeletal disorders (MSDs). Approximately \$1 out of every \$3 in workers compensation costs are directly related to MSDs. If this health risk is minimized, a business can see a reduction in lost workdays, worker's compensation costs, and insurance premium increases.



3. INCREASED PRODUCTIVITY

The more comfortable an employee is, the less distracted that employee is by their own discomfort. Recent studies have shown that those working within an optimal ergonomic work environment can see up to a 10%-15% increase in productivity. Conversely, those in workspaces where ergonomics are not a priority can become frustrated or fatigued resulting in inferior work.

NIGHTINGALE CASE STUDY



High grades for Nightingale at Centennial College

For Centennial College, the main concern was finding furniture that would last. It had to—because money for new furniture wasn't going to be available again anytime soon, because college students aren't known for treading gently when studying hard, and because taxpayers expect good value.

So those charged with evaluating bids to furnish its Toronto Campuses took a dim view of the bids that seemed to sacrifice long-term value for low initial cost. An independent consultant came aboard to dig into the bids and uncover the real cost of ownership. The most economical option? Nightingale seating. "When we looked at everything—warranty, quality, service, expected life span—it became clear that Nightingale offered the best value over the life of the product," says Fidelis Tagsa, who also serves as project manager for the campus.

"Nightingale's warranty was a deciding factor," adds Rose Ann, a purchasing manager at Centennial. "In an industry where limited lifetime warranties are the norm—emphasis on limited—Nightingale's warranty and service really stood out."

NIGHTINGALECHAIRS.COM

Easy On The Environment

Their buildings also incorporate next-generation smart systems for energy efficiency—temperature and lighting in all classrooms and office areas, for instance, adjust automatically as outdoor conditions change. With plans to pursue LEED certification from the start, the college scrutinized the environmental attributes of Nightingale products throughout the specification process.

"Our proposal included LEED summaries for all products, as well as information about Nightingale's ecoScorecard calculator," says Fidelis. "The college was interested in products that could demonstrate low VOCs, recyclability, and cradle-to-cradle attributes."

It found plenty, since classrooms, faculty workstations, common areas, the staff lounge—virtually the entire building is furnished with Nightingale products that are kind to the earth.

Most evident is the 100 percent recyclable NXO chair—more than 3,000 of them, mostly in classrooms and common areas. Nesting, stackable, lightweight, and specified with casters, the chairs are easy to move around or out of the way. "We researched the virtues of flexible classrooms and social spaces and really liked the ability of Caper to support quick reconfiguration," Mr. Tagsa says.

NIGHTINGALE CASE STUDY

CXO and IC2

Aesthetics also played a role in the college’s furniture decisions, most notably in the workstations and work chairs chosen for faculty. The college enlisted a team of faculty members to check out the candidates—consensus emerged around the IC2 and the CXO chairs.

“Ample workspace, daylight penetration, a balance between privacy and interaction—no other product came close to the IC2 in offering the workstation attributes our faculty wanted”.

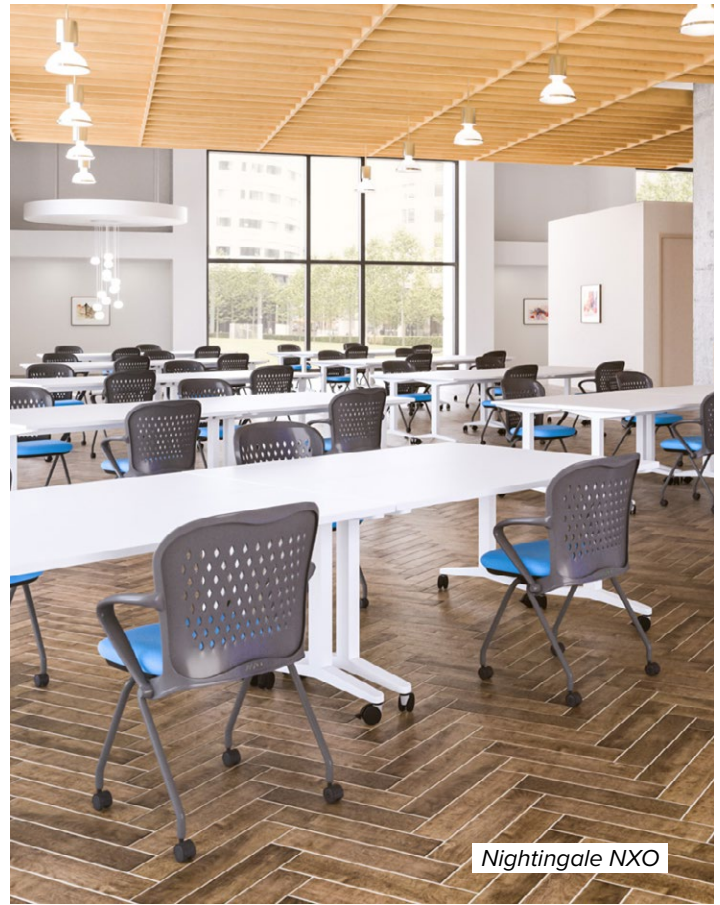
As for the CXO, the faculty team decided it simply looked and felt better than the rest of the field. The chair’s striking comfort and aesthetics are anchored in a generous memory foam seat (Nightingale’s Enersorb Foam), that makes this chair the most comfortable chair ever used here. The CXO offers ample adjustments, it also delivers passive and active lumbar support through every movement and posture. “The faculty team just loved how it sat,” Fidelis says. “Their seats kept coming back to CXO.”

Take A Tour

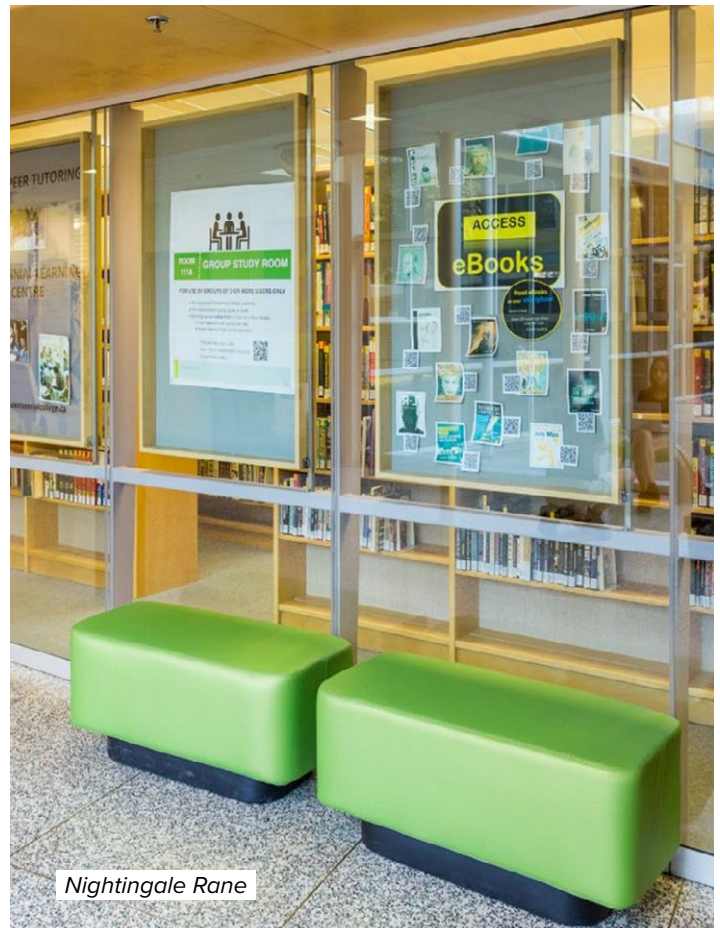
As for the rest of the buildings, Nightingale turns up just about everywhere— MXO chairs in meeting rooms, LXO chairs for receptionists and lab instructors, and NXOs in all classrooms.

Keep going and you’ll find two common areas that supplement the NXO chairs chairs with Tablet NXOs, as well as modular Danforth and Trullo lunge seating, chosen for both its design and durability.

“The college had used Nightingale here and there in the past, but this was by far our largest purchase”. “Normally, our schools likes to take the lowest bid. In this case, we were able to demonstrate that the lowest total cost was a better way to go.”



Nightingale NXO



Nightingale Rane

About the CXO

The CXO™ is the most comfortable chair in the world. Enersorb™ foam seat and headrest, supportive mesh back, 4D adjustable lumbar support, and multi-adjustable arms are some of the features that make this our best-selling chair.



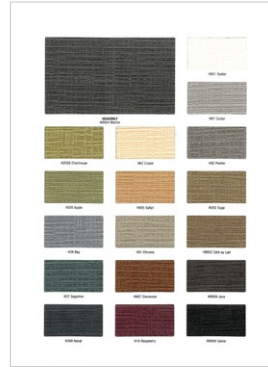
NEW IN MARKETING



STRETCH COLLECTION

The Stretch Collection features:

- Mystic
- Beehave
- Moguls
- Meridian



FOUNDATION/ HEAVENLY COLLECTION

The Foundation/Heavenly Collection features:

- Foundation
- Heavenly



PVC FREE COLLECTION

The PVC Free Collection features:

- Canter
- Bravo
- Beeline
- Max



LEATHER COLLECTION

The Leather Collection features:

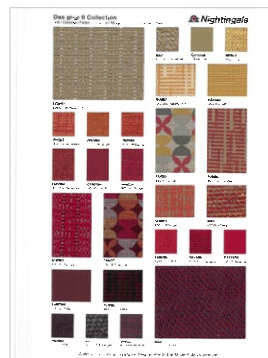
- Leather
- Vinyl



DESIGNER COLLECTION

The Designer Collection features:

- Cover Cloth
- Guild
- Faux Felt
- Tradition
- Canter EPU
- Graph
- Endurance EPU
- Epic
- Beeline EPU
- Infinity
- Slice
- Lineup
- Cashmere II
- Fuse
- Origin



DESIGNER II COLLECTION

The Designer II Collection features:

- Bali
- Caressa
- Fedora
- Havana
- Mingle
- Rumba
- Sydney
- Tango



DESIGNER III COLLECTION

The Designer III Collection features:

- Continuum
- Optic
- Prism
- Theory
- Variant

ABOUT US

Founded in 1928, Nightingale is a leading office seating manufacturing company with a growing global presence. Premium quality products are hand-assembled in our cutting-edge facility. Our commitment to comfort, quality, and innovation has driven our vision to be a global industry leader.

 **Nightingale**

 **BEST
MANAGED
COMPANIES**



CRICKET II 502

CONTACT

General Information

Main Office

(905) 896 3434

info@nightingalechairs.com

www.nightingalechairs.com

Sales Inquiries

Customer Care

1 (800) 363-8954

customer care@nightingalechairs.com

ISO 14001 & 9001 CERTIFIED
TB117-2013 COMPLIANT



certified by NSF