

Nightingale Highlights

JULY 2021



EC2 235

The CXO: An Ergonomic Task Chair Icon!



Shown in Moguls, Flare

CXO 6200

Launched in 2002, the CXO cemented its place in the industry and quickly became one of Nightingale's best-selling chairs. Since then, it has remained at the forefront of the seating industry by evolving to meet and exceed consumers' needs and expectations.

Nightingale built off the momentum of the CXO's successful launch by expanding the series to include five model options: Standard, Leather, Task Intensive, Heavy Duty and Guest. The CXO series has evolved overtime to provide comfort to a wide range of users in various seating environments.

The CXO has undergone six generational upgrades since its launch in order to provide the user with an ever better sitting experience, without compromising on quality or comfort. Beyond inspiring additional CXO models, the original CXO sparked the creation of Nightingale's entire innovative XO seating collection.

The CXO is the most comfortable chair in the world thanks to its intuitive and innovative design. The synchronous knee-tilt mechanism with slow seat and back release was one of the first of its kind to be on the market. It is the unique combination and capabilities of this mechanism that allowed the CXO to capture the attention of designers, dealers and consumers.

The CXO embodies Nightingale's dedication to providing top-quality, ergonomic and durable seating solutions. The CXO is a one size fits all chair thanks to its adjustable mechanisms making it comfortable for any user. Nightingale's Enersorb™ foam enhances the sitting experience with its padded seat and delivers exceptional comfort.

The CXO is just as relevant today as when released, which speaks to its enduring design and enhanced ergonomic support capabilities. Nightingale is determined to carry on the legacy of the CXO and can ensure more generations of this iconic chair are still to come.

Nightingale Wins Gold in the 2021 Muse Design Awards



Shown in Beeline EPU, Nimbus

CXO 6200D

Nightingale is excited to announce that our award-winning CXO is a 2021 Muse Award Gold Winner! Nightingale's iconic CXO chair wins a Gold Muse Design Award in the Office Furniture category.

The CXO is a sleek, high-performance, fully adjustable executive work chair. With innovative ergonomic technology, strong lumbar support, and our thickest Enersorb™ foam, the CXO is the most comfortable chair in the world.

Notable design features of the CXO include:

- Its breathable ABLEX™ mesh back which provides generous lumbar support and dynamic movement
- Its energy absorbing Enersorb™ foam that can be found in the seat, lumbar and headrest to offer unsurpassed comfort
- Its innovative lumbar support pad that can be easily adjusted up/down and in/out for personalized support and comfort
- Optional headrest adjusts up/down, tilts backwards and has a built-in coat hook
- Its waterfall seat design alleviates pressure and promotes good posture

- The Task Intensive model can support users up to 350 pounds, the Heavy Duty model can support users up to 450 pounds
- The Leather model provides an elegant finish to an already distinguished high-quality chair

With its striking, executive design and clean finish, it's a chair that looks as good as it feels. Available in five model options: Standard, Leather, Task Intensive, Heavy Duty and Guest Chair, there is a CXO for any user.

Nightingale is very proud that the CXO is a Gold Winner in the Office Furniture category for the 2021 Muse Design Awards.

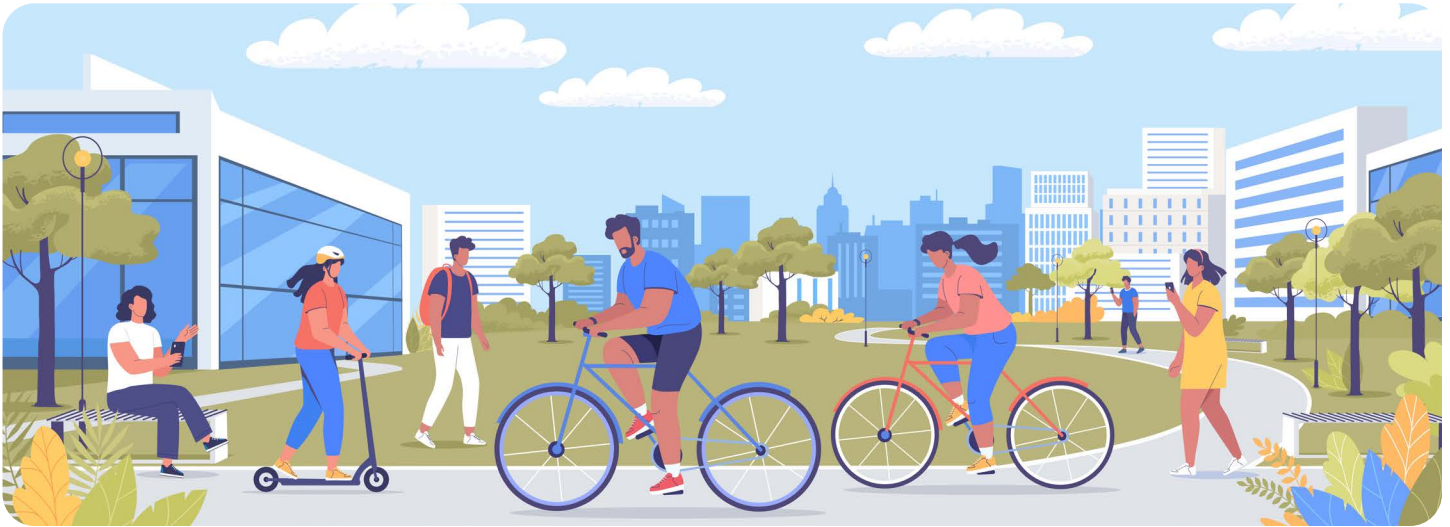
About the MUSE Design Awards

The MUSE Design Awards honor professionals whose work is thoughtful, groundbreaking and innovative. The Muse Awards showcase products that have timeless and inspired designs. The Furniture Design Category highlights products that redefine the environments they are in as a result of their uniquely stylized aesthetics and overall product composition.

July is Anti-Boredom Month

We are half-way through the year and life may be getting a bit repetitive. Luckily, it is National Anti-Boredom month which means now is the time to think of exciting ways

to change up your routine. Here are some adventurous activities you can do to keep yourself entertained this summer season.

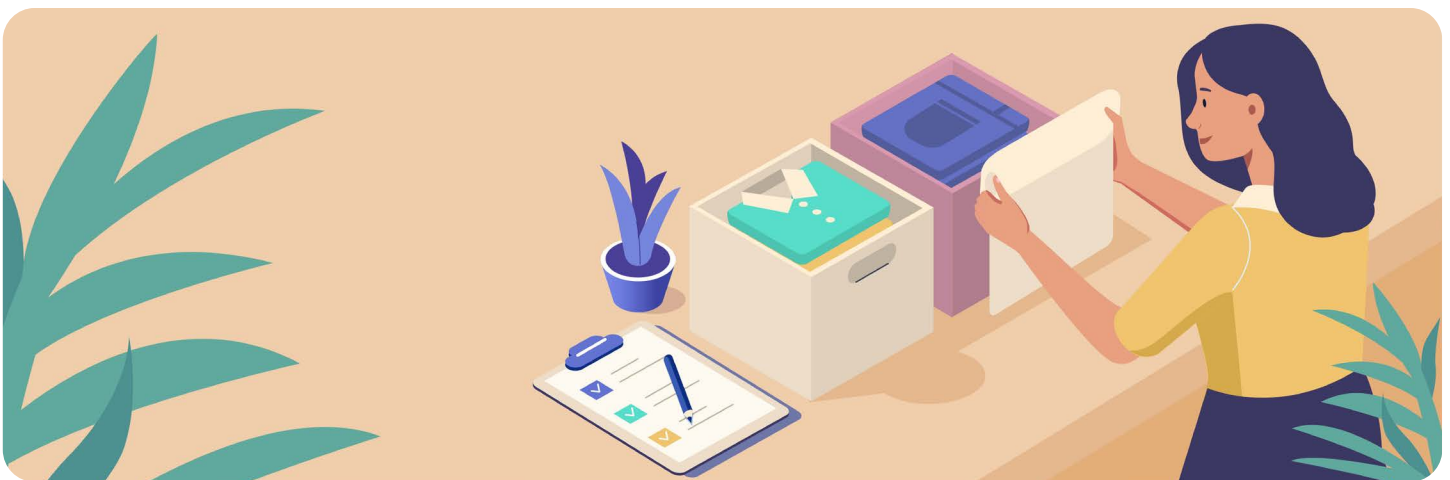


Get Moving

- 1) If you normally go for walks, discover an alternate route or travel different streets. A new environment enhances your senses and actively engages your mind.
- 2) Try a new sport or outdoor activity such as tennis or golf.

Your time will be filled with learning the techniques of whichever sport you choose.

- 3) Find a hiking trail. Hiking can be an all-day activity and is great for physical and mental health as it allows you to explore and connect with nature.



Get Productive

Tackle the chores you have been putting off. It may sound boring, but the satisfaction from completing such tasks is quite rewarding. Empty out your closet, deep clean your bathroom

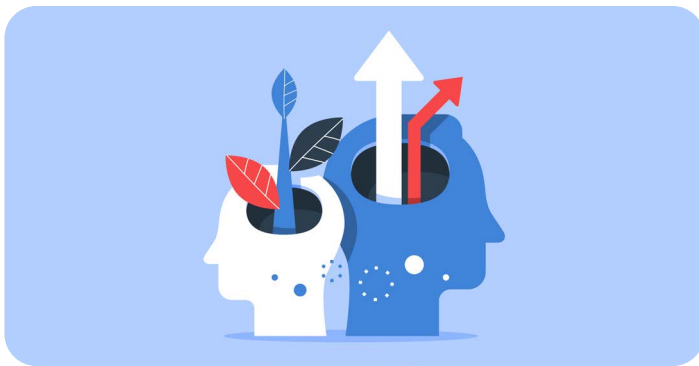
or reorganize your pantry. It is fulfilling to see the results of your hard work at the end of the day.



Get Creative

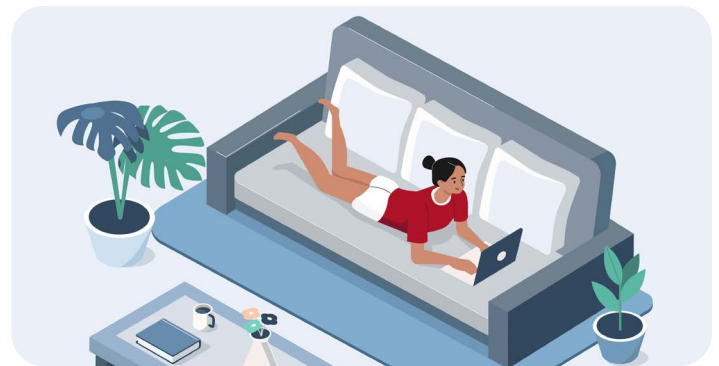
There are many creative outlets you can use to fill your time. Painting, journaling, or even learning how to play an

instrument are all fun and inspired activities that are sure to enrich your days.



Get Inspired

Take time to focus on yourself. Determine what you want from life personally and professionally, and how best to achieve it. Practicing self-awareness through yoga and meditation, along with creating a vision board are all simple steps you can take to accomplish your goals. If you make these daily habits, your days will always feel meaningful and never dull.



Get Comfortable

When you're bored it can be hard to motivate yourself to start new projects, in that case have a pamper day. Treat yourself to your favorite foods, cozy up with a book or binge-watch a TV show. A relaxing day can be the best way to unwind and prepare yourself for the adventurous days that lie ahead.

Make the most of Anti-Boredom Month by trying new activities and taking up new hobbies to guarantee you are engaged, occupied and certainly not bored this July.

Nightingale Cares About Its Customers



Nightingale puts purpose before profit. Our purpose is to provide high quality ergonomic seating to all customers. In order to deliver the best service to clients, Nightingale annually distributes customer feedback surveys to analyze and improve upon its services. Direct customer engagement allows the company to identify best practices and areas of improvement.

As part of our commitment to our ISO 9001 program, Nightingale annually surveys its customers to inquire about the level of service and support that we provide to them. This is a primary component of our continuous improvement and underlying desire to push this rating higher each year.

This year's impressive 93% customer satisfaction rating reflects Nightingale's relentless efforts to enhance its customer care capabilities. Nightingale is proud to have attained this level of approval from our customer base and is constantly working to improve this number.

Nightingale is able to reach such high satisfaction rates as a result of its strong corporate strategy which allows for

quick reaction and response to any customer issues, should they arise. The company aims to deliver optimal results to all customers by continuing to innovate its protocols and procedures.

The Customer Care Team continues to build upon its product knowledge to deliver the seating expertise that Nightingale customers have come to expect over our 93 years of operation. Nightingale sees its customer experience as the differentiating factor that allows the company to separate itself from competitors.

Customer satisfaction is one of Nightingale's key strategic pillars and so the information gathered from these annual surveys is very meaningful. Thank you to all the clients who participate in providing feedback. Year after year, these surveys help Nightingale deliver exceptional service and ensure that we continue to successfully work and grow with our customers to drive results for everyone. Nightingale is excited to continue providing our quality seating products to customers while enhancing customer care capabilities.

Thank you for the feedback!



Nightingale Named Office Seating Manufacturer for 2021



Nightingale has been recognized as Office Seating Manufacturer of the Year for 2021 by M&A Today Global Awards. This is the second consecutive year Nightingale has received this designation.

The awards highlight companies that are true leaders within their industry. According to M&A Today their awards program “provides a benchmark of the very best of the best industry leaders, exemplary teams and distinguished organizations, based on the simple principles of veracity, accuracy and insight.”

Winners are chosen after passing an initial assessment and subsequent judging stage that focuses on the complexity and strategic success of corporate achievements.

Nightingale’s win will be featured in the 2021 M&A Today Global Awards publication that is distributed to hundreds of thousands of global readers and subscribers.

Nightingale is pleased to once again receive the title of Office Seating Manufacturer of the Year by the M&A Today Awards for 2021.

Meet the Manno

Nightingale's Manno is an executive series chair that is classic in appearance, yet modern in design.



MANNO 8600D



The wood accent arm caps are recessed within the unique loop arm and away from arm edge to protect them from damage due to constant contact with the edge of the work surface.



MANNO 8600D-WP

Its graceful, theatrical lines pair with undeniable comfort, to give the chair its polished and professional finish. Manno comes in a variety of model options including mid back, high back, chrome and cantilever base and a wood package to give the product a more luxurious appearance.

The Manno comes standard with the following features:

- Synchro-tilt swivel mechanism that features slow-release, dual position tilt-lock, pneumatic height adjustments and side tension control.
- The seat and back are made with energy absorbing Enersorb™ foam to provide users with ultimate comfort. The foam conforms to your body and disperses your weight to ergonomically improve circulation and relieve pressure points.
- Contoured back for proper ergonomic support.
- 5-prong heavy duty base with 2" dual wheel carpet casters.

The Manno's softly padded upholstered arms give the chair its distinct look. The cantilever seat model has a flex-back, cantilevered, steel-reinforced frame that is finished in a crinkle epoxy powder coat, electrostatically applied for corrosion resistance.

The pillow upholstery technique is used on the Manno with vinyl, leather or leather plus textiles to provide the chair with a wrinkled, plush appearance.

Manno Design Enhancement

The design of the Manno series has been upgraded with optional new styled arm wood cap accents. Available in 5 wood satin finishes: Cherry, Mellow Oak, Natural, Mahogany, and Walnut.

ABOUT US

Founded in 1928, Nightingale is a contract seating manufacturer that puts purpose before profit. By collaborating with top designers, engineers and research teams, we create quality ergonomic products that are good for your body and the planet. Nightingale is one of the country's Greenest Employers and is committed to building products with minimal carbon footprints that are recyclable, sustainable and durable. All our products are made in our waste-free facility powered by clean energy. As one of the country's Best Managed companies, Nightingale's commitment to comfort, quality and innovation drives our vision to be a global industry leader.

We invite you to visit us at www.nightingalechairs.com to view all our quality seating options, obtain virtual literature, use the My Chair Maker app, learn more about our green initiatives and discover Nightingale's story.



CONTACT

General Information

Sales Inquiries

ISO 14001 & 9001 CERTIFIED
TB117-2013 COMPLIANT

Main Office

(905) 896 3434

info@nightingalechairs.com
www.nightingalechairs.com

Customer Care

1 (800) 363-8954

customercare@nightingalechairs.com

