

Nightingale Highlights

MARCH 2021



BLESS 2100

Nightingale Receives WSIB Award



Nightingale is pleased to announce it has been recognized by the WSIB (Workplace Safety and Insurance Board) for its exemplary industry performance in 2020. This is the fourth year in which Nightingale's workplace performance has exceeded industry standards. WSIB is awarded to businesses who demonstrate a strong commitment and adherence to workplace safety concerns. WSIB considers company performance related to injury claims, industry standards and health and safety maintenance when making its decision to award companies.

The WSIB award is a significant achievement for Nightingale considering it operates in the manufacturing industry, where the chances of workplace accidents are more likely to occur compared to other sectors. At Nightingale, we continually invest in the safety and security of our facility because our people are our greatest asset. The factory and all supervisors are constantly monitored and evaluated to ensure our rigorous health and safety standards are upheld.

Nightingale's factory is waste-free and free from off-gassing that is common in many manufacturing plants. The company

is LEED, BIFMA Level 2, Greenguard and ISO 9001:2008 certified.

In 2020, Nightingale quickly adapted to meet the unprecedented health and safety guidelines that were established due to Covid-19. Renovations and facility enhancements such as installing improved air filtration systems and creating safe, socially distanced work areas were completed to ensure our employees' health and safety.

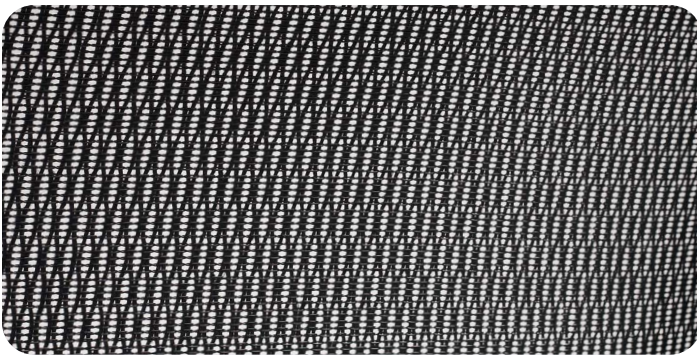
Workplace health and safety is extremely important to Nightingale and we are honored to have our efforts recognized by WSIB for the fourth time.

About the Workplace Safety and Insurance Board (WSIB): The Workplace Safety and Insurance Board is an independent trust agency that administers compensation and no-fault insurance for Ontario workplaces. They are committed to delivering what matters to the workers and employers of Ontario: fast, accessible service and fair benefits at a fair price. For more information, visit www.wsib.on.ca



Nightingale Mesh: Ablex™ and Nebula™

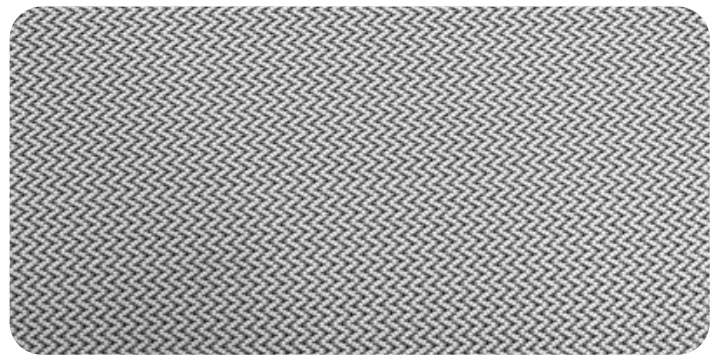
Not all mesh is the same and Nightingale's unique ABLEX™ and Nebula™ mesh technologies stand out from the rest. Keep reading to learn about these distinctive mesh offerings.



ABLEX™

This translucent weave pattern offers tremendous tensile strength; resulting in superior lumbar support and side-to-side torso flex movement. The monofilament rubberized coating on the polyester mesh enables its “bounce back” memory. Air flows freely through this mesh to offer added comfort in any environment. Nightingale attaches ABLEX™ mesh to the frame to provide the chair with a pre-set tension. ABLEX™ responds to the weight and shape of each user to deliver the exact amount of tension required to provide generous lumbar support while allowing for dynamic movement.

ABLEX™ mesh is featured on Nightingale's Bless, CXO, GXO, LXO, MXO, OXO, WXO, and SXO chairs.



Nebula™

Boasting many of the same ergonomic user benefits as ABLEX™, Nebula™ differentiates itself by being a dual mesh that is interwoven with a 4-way stretch fabric. Using this on the back of your chair allows air to pass freely, making it comfortable in all environments. Nebula™ mesh allows for dynamic movement, so it effortlessly supports the user as they move throughout the day.

Find the ultra-breathable Nebula™ mesh on the following Nightingale chairs: IC2, EXO, and VXO.

Please note that Nightingale's ABLEX™ and Nebula™ mesh options are available in either Black or Silver. Black mesh is standard, where Silver is an upgrade. However, Silver mesh comes standard when ordering the white frame package.

NLC (Next Level Chair)

Seating Applications



Nightingale's NLC (Next Level Chair) comes in multiple models and options. NLC was designed for five application categories: 24hr, Ergonomic Task, Executive, Conference and Sit/stand Stool. With a wide selection of seating options, the NLC takes style, comfort and customization to the next level.

The NLC is a multi-purpose statement chair that aesthetically matches any space and easily adjusts to suit individual user needs. Available in mid or high-backed models, the NLC is ahead of the curve with its signature Newton Wafer™ mechanism and innovative built-in adjustable lumbar support.

Users are in ultimate control of their comfort with the chair's endless adaptable features such as its adjustable headrest, integrated seat slider and side tension adjustment. Engineered for strength and comfort, the NLC can handle the stress of 24-hour workdays and support users up to 350lbs. Optional 4-D or flip-up arms further the chair's customizable

capabilities and ensure the best sitting experience. The 4-D arms adjust in height and width as well as slide and pivot for maximum comfort. The flip-up arms allow users to quickly move in and out of their seats without restriction.

The NLC is the optimal multi-purpose office chair and the newest edition of the NLC stool rounds out this statement product series. Not your average sit/stand stool, this has all the quality ergonomic features of the classic NLC but in a contemporary sit-to-stand option. With heavy-duty foot support, flip-up arms, auto-swivel mechanism and pneumatic gas lift the NLC stool provides next level comfort and style for your working and drafting needs.

With five seating application categories Nightingale's NLC is a state-of-the-art chair designed to fit every space and adapt to every user. This series can be upholstered in any material: vinyl, fabric or leather. Choose from Nightingale's wide selection of materials or send us your own material (COM).

Nightingale Healthcare

Nightingale is proud to offer a diverse selection of healthcare seating that can elevate the performance and comfort level of various healthcare environments.



DOCTOR USE / EXAM ROOM / LAB ROOM



ONE

Surgeon Console

Modern and sophisticated, the Surgeon Console chair was engineered to provide individual support for prolonged periods of time. The patented self-adjusting back and armrest support offers top-level ergonomic comfort that the user will appreciate.



TWO

1000 Series Stool

Practical, functional and versatile. Nightingale's Stool is an economical and comfortable chair engineered for use in medical, dental, laboratory or small-space environments where mobility is essential.

WAITING ROOM / GUEST AREA / PATIENT ROOM



ONE

Cricket Bariatric

Durable and comfortable, the Cricket Bariatric is a heavy-duty seat capable of supporting users up to 500 pounds. It is well suited for many healthcare applications including reception and guest seating requirements.



TWO

Butterfly

Lightweight, mobile and easily adaptable. Accommodating Butterfly chairs make it easy for health professionals to quickly come together, move around or move apart.



THREE

Will

Clean, tailored and essential. The Will is a sensible and cultivated modular armchair. The Will is made with easily replaceable components making it a durable and reliable guest chair.



FOUR

Beetle

A high-density, stackable chair. Comfortable enough for daily use and easy to store, the Beetle is an all-purpose stacker for educational, institutional or group seating needs.



FIVE

Firefly II

The Firefly II is a mobile and dynamic stackable guest chair that suits the needs of flexible work environments. It is light and simple to move, and the all plastic model is easily cleanable making it ideal for shared spaces.



SIX

Cricket II

Functional and comfortable, Cricket II chairs are easily grouped or stacked. Its wide compound curved back and waterfall seat provide users with enhanced comfort and support.

MEETING ROOM



ONE

VXO

Its modern profile and user-friendly adjustment mechanisms make it an all-star ergonomic task chair that is all style and no fuss. The mid-back model with fixed loop arms is ideal for conference or meeting spaces.



TWO

NXO

Versatile and extremely comfortable, the NXO is a stacking and nesting chair with folding seat making it perfect for meetings, trainings or group areas. Its oscillating back and Enersorb™ seat foam provide exceptional ergonomic comfort and support.



THREE

Butterfly

The lightweight Butterfly is a specialty stackable chair that helps people quickly come together to accomplish the task at hand. The integrated handle in the chair's back makes it simple to carry and move around as needed.



FOUR

Tuxedo

Contemporary and sophisticated, the Tuxedo is extremely comfortable and distinguished conference chair that will enhance any conference room.

NIGHTINGALE HIGHLIGHTS /

SHIFT WORK / NURSES' STATION



ONE

WOXO

The design and construction of the WOXO incorporates ergonomic principles and technologies. Its refined sleek profile with distinctive comfort and support make the WOXO an ideal task chair for healthcare environments.



TWO

Bradley

Engineered to meet the rigorous demands of modern workspaces. Classic design meets Nightingale's first-class ergonomic technology to create all-day comfort provided by the Bradley. Bradley will exceed the demands of long workdays.



THREE

Overtime

The chair that works as long as you do, this heavy-duty task chair can handle it all. Overtime is engineered to provide enduring comfort and support for individuals up to 300 pounds. Its sturdy adjustable back, high density foam, and swivel tilt mechanism make it ideal for 24-hour work environments.



FOUR

VXO

The VXO Stool offers a simple light scale design that delivers remarkable comfort and dynamic support in an innovative sit-to-stand format or counter height use.

Nightingale is excited to provide quality seating options for all members of the healthcare community who desire ergonomic support without compromising on comfort and style. Please note Nightingale has a variety of easily cleanable and anti-bacterial textile options that can be used to further enhance the durability of the Healthcare products mentioned above.

The Impact of Ergonomic Seating on Productivity

Nightingale prides itself on creating high quality ergonomic products that deliver improved comfort and performance to its users. All Nightingale chairs are crafted to support users throughout their workday.

Nightingale has multiple ergonomic seating lines that will fit

seamlessly into any workspace while increasing employee well-being and efficiency. Nightingale's CXO, NLC, IC2, SXO, Ergo-Learn and Bless are just a few chairs from our robust ergonomic task category. Please read below to learn about the positive impact that Nightingale's seating options can have on workplace productivity:



Improve Focus

When companies provide their employees with comfortable and supportive seating, they allow them to solely focus on their work rather than be distracted by an uncomfortable chair. This investment in employee comfort will increase productivity, concentration levels and positively impact company performance.



Encourage Movement

The best ergonomic chairs are highly customizable and constantly adjust to support the dynamic movements of its user. Nightingale's combination of personalized ergonomics and quality engineering allows the user to work uninhibited throughout the day.

Nightingale chairs come equipped with several customizable options such as: flip up arms, 4-D arms, seat-slider, tilt-lock, integrated lumbar support, adjustable headrest and much more. No matter the task at hand, Nightingale has a chair suitable for any user.

Improved Sitting Experience = Improved Productivity

Studies have shown that an improved sitting experience results in enhanced productivity. Up to 40% of an employee's energy is spent focusing on finding or maintaining their posture and comfort while seated. By investing in quality ergonomic seating such as the Nightingale products mentioned above, individual productivity rates can increase 30% because users

will be supported by their chair. This will result in 70% of employee energy to be solely focused on individual workplace performance. Empowering your space with ergonomic seating will enhance the sitting experience of all employees, boost productivity and contribute to the potential increase of overall company growth.

Nightingale Wins Bespoke Office Chair Manufacturer of the Year



Nightingale is excited to announce its success in the 2021 Canadian Business Awards after being named Bespoke Office Chair Manufacturer of the Year by Corporate Vision.

Notable past winners of this award are the University of Toronto, Bruce Power, Molson Coors and the Ontario Science Centre. Nightingale is pleased to be named alongside these and many other distinguishable Canadian companies.

This win marks Nightingale's third consecutive year earning this distinction from the Canadian Business Awards. This renewed recognition motivates the company to continue

innovating, creating and delivering the highest quality products to its customers.

The Canadian Business Awards judging panel examines companies based on their industry expertise, dedication to client satisfaction and an ongoing commitment to excellence and innovation. Winning this award exposes Nightingale to more local businesses along with Corporate Vision's 155,000 subscribers.

Nightingale is thrilled to be recognized as the Bespoke Office Manufacturer of the Year by Corporate Vision for the 2021 Canadian Business Awards.

ABOUT US

Founded in 1928, Nightingale is a contract seating manufacturer that puts purpose before profit. By collaborating with top designers, engineers and research teams, we create quality ergonomic products that are good for your body and the planet. Nightingale is one of the country's Greenest Employers and is committed to building products with minimal carbon footprints that are recyclable, sustainable and durable. All our products are made in our waste-free facility powered by clean energy. As one of the country's Best Managed companies, Nightingale's commitment to comfort, quality and innovation drives our vision to be a global industry leader.

We invite you to visit us at www.nightingalechairs.com to view all our quality seating options, obtain virtual literature, use the My Chair Maker app, learn more about our green initiatives and discover Nightingale's story.



CONTACT

General Information

Sales Inquiries

ISO 14001 & 9001 CERTIFIED
TB117-2013 COMPLIANT

Main Office

(905) 896 3434

info@nightingalechairs.com
www.nightingalechairs.com

Customer Care

1 (800) 363-8954

customercare@nightingalechairs.com

