

# Nightingale Highlights

MARCH 2020



HELEN 925

## WHAT'S NEW 2020

Nightingale is proud to introduce the Cricket II Series. The Cricket II features a modern square back design and is available with or without casters and arms.



## EC2 DESIGN ENHANCEMENT

The design of the EC2 series has been upgraded with a new mechanism that is easier to adjust and provides a smoother ride with enhanced tension control.



### A. MULTI POSITION TILT LOCK

Turn lever up to unlock, turn down to lock.



### B. TENSION KNOB

Turn knob clockwise to increase tension, turn counter-clockwise to decrease tension.



### C. PNEUMATIC HEIGHT ADJUSTMENT

To lower, turn the lever up while seated. To raise, turn lever up with your weight off the seat.



## Danforth II Enhanced Offering

The Danforth II is now available in three arm options: Straight, Rolled, and Modern Flare. It is no ordinary lounge seat—it's ecological, essential, and tailored to fit in small or large spaces. With the addition of a rolled arm option,

providing a residential feel and flared arm option for a more confident appearance, the Danforth II series can be configured to fit any space. It's a lounge solution that will allow your work life to feel as comfortable as possible.



Modern Flared Arms



Straight Arms



Rolled Arms

## Modular Construction

With easily replaceable components and quickly assembled modular construction, the Danforth II is built to last. The perfect combination of comfort, style and functionality.



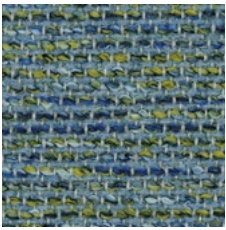
## NIGHTINGALE HIGHLIGHTS

# NEW TEXTILES!

Nightingale is excited to announce our partnership with Mayer Fabrics. Mayer Fabrics consistently delivers innovative and effective contract textile solutions that bridge the gaps between design, durability, affordability

and sustainability. These exciting new lines will increase our range of color and texture. The grading of these new textiles will range between Grade 3 – Grade 6. Samples will be available on our Designer II and Designer III textile cards.

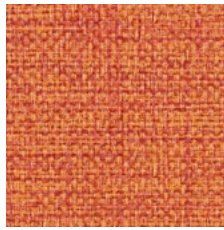
### Designer II Collection



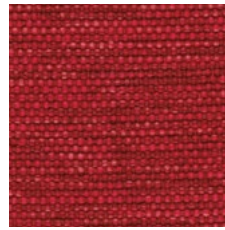
Bali I Grade 4



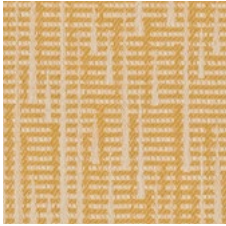
Fedora I Grade 5



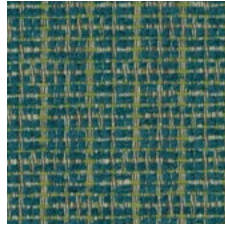
Mingle I Grade 6



Havana I Grade 4



Rumba I Grade 3



Sydney I Grade 4

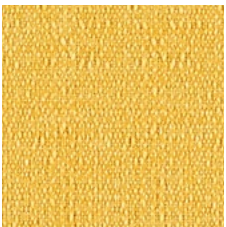


Tango I Grade 4

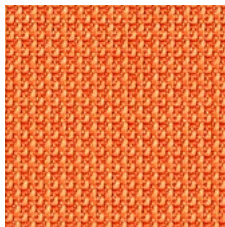


Caressa I Grade 5

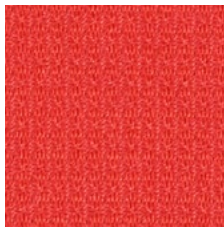
### Designer III Collection



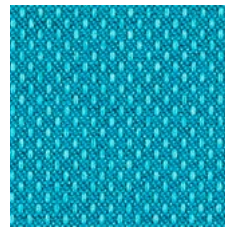
Continuum I Grade 4



Optic I Grade 4



Prism I Grade 4



Variant I Grade 4



Theory I Grade 4

# NEW IN MARKETING



## DESIGNER COLLECTION

The Designer Collection features:

- Cover Cloth
- Guild
- Faux Felt
- Tradition
- Canter EPU
- Graph
- Endurance EPU
- Epic
- Beeline EPU
- Infinity
- Slice
- Lineup
- Cashmere II
- Fuse
- Origin



## DESIGNER II COLLECTION

The Designer II Collection features:

- Bali
- Caressa
- Fedora
- Havana
- Mingle
- Rumba
- Sydney
- Tango



## DESIGNER III COLLECTION

The Designer III Collection features:

- Continuum
- Optic
- Prism
- Theory
- Variant



## LEATHER COLLECTION

The Leather Collection features:

- Leather
- Vinyl



## STRETCH COLLECTION

The Stretch Collection features:

- Mystic
- Beehave
- Moguls
- Meridian



## FOUNDATION/ HEAVENLY COLLECTION

The Foundation/Heavenly Collection features:

- Foundation
- Heavenly

## ABOUT US

Founded in 1928, Nightingale is a leading office seating manufacturing company with a growing global presence. Premium quality products are hand-assembled in our cutting-edge facility. Our commitment to comfort, quality, and innovation has driven our vision to be a global industry leader.

 **Nightingale**

 **BEST  
MANAGED  
COMPANIES**



CRICKET II 500

## CONTACT

General Information

**Main Office**

(905) 896 3434

[info@nightingalechairs.com](mailto:info@nightingalechairs.com)

[www.nightingalechairs.com](http://www.nightingalechairs.com)

Sales Inquiries

**Customer Care**

1 (800) 363-8954

[customer care@nightingalechairs.com](mailto:customer care@nightingalechairs.com)

ISO 14001 & 9001 CERTIFIED  
TB117-2013 COMPLIANT

