

NLC

 Nightingale



2020 Series

[nightingalechairs.com](http://nightingalechairs.com)

## **NEXT LEVEL DESIGN**

Like most truly innovative products, William R. Breen created the Next Level Chair—‘NLC’—from years’ worth of evolution in the seating industry. Not one to blindly follow trends, Breen’s design envisions how an office chair can serve multiple purposes and adjust to suit each individual user’s needs. His philosophy of design is always holistic, focused on user comfort and ease of use. The NLC reflects his desire to create “a piece of furniture, not just a chair”; it is a stylish, design-forward chair that will elevate the aesthetic of any space and match the sensibilities of the user.



**NLC 2020D** Felt Melange (Dale)  
**EC4 421** Timeless (Navy)

# ALL IN THE FAMILY





## NEXT LEVEL CHAIR

Wafer-thin mechanism. Smooth ride. Engineered for strength and comfort. Ahead of the Curve. Endless Possibilities. Next Level Chair.

## STANDARD FEATURES

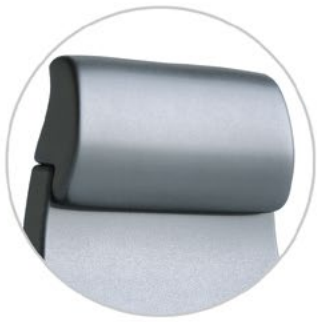
A statement chair that will take your boardroom, or conference room to the next level: the NLC with stylish loop arms is powerful but inviting. Driven by the NLC's signature Newton Wafer™ mechanism and easy ergonomic adjustments, the choice of mid-backed or high-backed models mixes comfort with class. The result? Next level performance.



**NLC 2020**  
Mid Back with Loop Arm



**NLC 2020D**  
High Back with Loop Arm



**1 ADJUSTABLE HEADREST**  
Height 2" adjustable, ergonomically shaped headrest incorporated into the frame of chair for maximum comfort and convenience. (2020D Only)



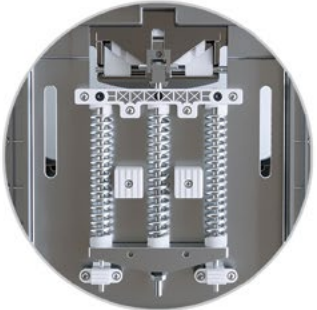
**2 LUMBAR SUPPORT**  
Compound curved back with built-in, height adjustable lumbar support for ergonomic comfort.



**3 INTEGRATED SEAT SLIDER**  
Intuitive cable activated spring assisted lever for easy seat depth adjustment.



**4 LOOP ARMS**  
Closed loop, polished aluminium arms with polyurethane arm pad for comfort and support.



**5 NEWTON WAFER™ MECHANISM**  
Patent-pending, thin profile mechanism that combines durability and stability, with continuous, even weighted balance through all positions with integrated, multi-position tilt lock and seat height adjustment.



**6 SIDE TENSION ADJUSTMENT**  
Easily adjust your desired tension so you can work with correct posture control.



**7 BASE AND CASTERS**  
5-prong, heavy-duty polished aluminium base. 2.5" translucent carpet casters.

RATED FOR  
**350lbs**

**3**  
SHIFTS  
A DAY

**24**  
HOURS

# OPTIONAL ARM FEATURES



**NLC 2020-FL**  
Mid Back Flip Arm



## FLIP-UP ARMS

Flip-up, polished aluminium arm with polyurethane arm pads.



Strong enough to support you while getting out of the chair, conveniently flipping out of the way when not needed.



**NLC 2020-A**  
Mid Back Adjustable Arm



## 4D ARMS - WIDTH

3" lockable adjustable arms move inward and outward for maximum comfort and versatility.



## 4D ARMS - HEIGHT

Ratchet locking adjustable arms move up and down to suit taller and shorter users.



## 4D ARMS - SLIDE

2" lockable adjustable arms slide forward and backward for the personalized support.



## 4D ARMS - PIVOT

30° adjustable arms pivot in and out for maximal comfort.



The NLC stool is a twist on the classic form. Featuring the NLC's signature Newton Wafer™ mechanism, flip-up-arms, and ergonomic adjustment. Not your average working stool, the NLC stool provides next level comfort and style for your working and drafting needs.



**NLC 2020-DS**  
Stool



**FOOT SUPPORT**

Heavy duty, aluminum polished foot support.



**FLIP-UP ARMS**

Polished aluminium arm with polyurethane arm pads. Arm pivots up and out of the way for easy access.



**SWIVEL MECHANISM**

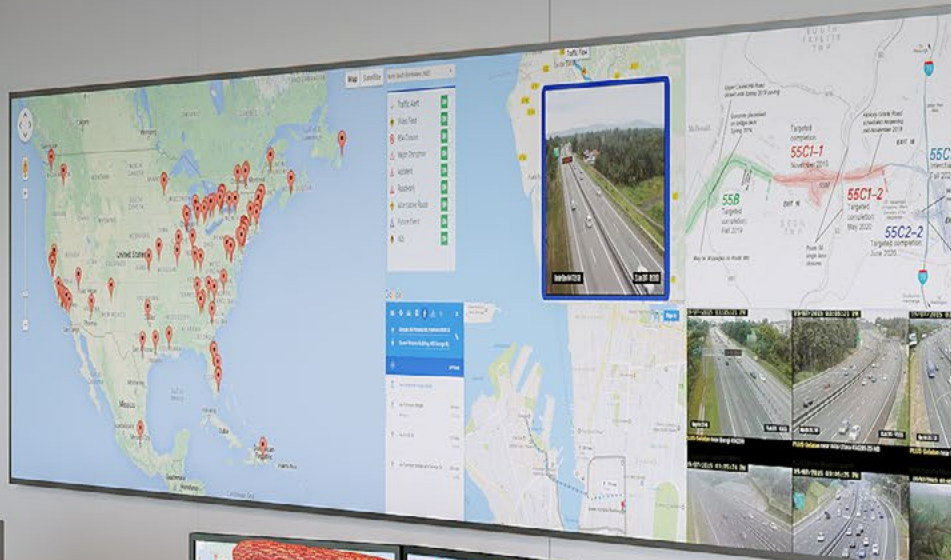
Swivel mechanism provides seamless durability and stability. Note: mechanism can only be adjusted for height and depth.



**PNEUMATIC GAS LIFT**

Pneumatic height adjustment for user support and comfort.

EMERGENCY  
DOOR  
DO NOT BLOCK



**NLC 2020D-FL**  
Fuse (Carmine)





## SPECIAL FEATURES

The NLC's Newton Wafer™ mechanism is wafer-thin with the strength of mechanisms twice its size. Its 3-spring, horizontal system supports and balances weight in infinite positions—plus it can be locked in multiple positions for added support if and when required. Alone in its class, it is durable, smooth, and low-profile.



The NLC features an easy to adjust ergonomic back lumbar support. Simply slide the knob on the back of the chair up or down to move the lumbar support pad into the optimal back position.





NLC 2020D-A  
Meridian (Cappuccino)



**NLC 2020-A**  
Meridian (Cappuccino)

# TEXTILES



**NLC 2020-FL**  
Mid Back with Flip Arm  
STRETCH COLLECTION  
BEE018 | Lemon



**NLC 2020**  
Mid Back with Loop Arm  
PVC FREE COLLECTION  
BEL10 | Myth



The NLC can be upholstered with any of our high-quality textiles, vinyls, or leathers. Customize your chair with our wide range of colors and grades on My Chair Maker: [nightingalechairs.com/my-chair-maker](https://nightingalechairs.com/my-chair-maker)



**NLC 2020D-A**  
High Back with Adjustable Arm  
LEATHER COLLECTION  
196 | Olive



**NLC 2020-DS**  
Stool with Flip Arm  
PATTERN COLLECTION  
AMU4 | Poppy





NLC 2020-DS  
Fuse (Ginger)

## ISO 14001 & ISO 9001 CERTIFIED TB117-2013 COMPLIANT

Made in a 100% waste free manufacturing facility.



### **DIMENSIONS DISCLAIMER**

Dimensions are subject to change without notice.  
Dimensions may have a variance of up to 0.5".  
Contact Nightingale if more precise measurements are needed.

### **TEXTILE DISCLAIMER**

Nightingale only upholsters with top quality materials.

Nightingale recommends ordering product samples at [www.nightingalechairs.com/textiles](http://www.nightingalechairs.com/textiles) before final purchase to get a more accurate representation of color. However, due to slight variations in dye lots, there can be slight color variations to received product.

Nightingale has made every effort to represent the colors and textures of these textiles, vinyls and leathers as accurately as possible. However, we cannot guarantee 100% accuracy, due to variations that occur in the printing process.



[nightingalechairs.com](http://nightingalechairs.com)

800 363 8954